



BRENNAN



2
STRONG

A modern living room with large windows, a wooden console table, a rug, and a chair. The room is bright and airy, with a view of greenery outside. The text '2 STRONG' is overlaid on the image.

2 STRONG

2 Strong Place offers you what no other new construction, or existing townhome, can: a luxurious and spacious, well-crafted and light-filled interior wrapped in an impeccably detailed and historically contextual brick over brownstone exterior. You know you are home when you rise above the sidewalk atop your own brownstone stoop on the authentically beautiful tree-lined Strong Place, Cobble Hill, Brooklyn. Behind the Mansion style facade, 2 Strong Place is an expansive 4,000 sq. ft., 6-bedroom, 4.5-bath single-family home with an 800 sq. ft. Carriage House for parking. 2 Strong Place defines exceptional comfort and privacy: leaf dappled light streaming through large divided-lite double hung windows, a rear double-height window wall, natural light from a skylight above drenching floors below, three exposures with two sets of oriel windows, and generously-sized living spaces and bedrooms, high-ceilinged cellar, custom kitchen laid out with socializing and elaborate cooking in mind, a rear garden and side yard for planting, both front and rear rooftop terraces, with views, and a private planted terrace off the master bedroom. This is a real home, your home.



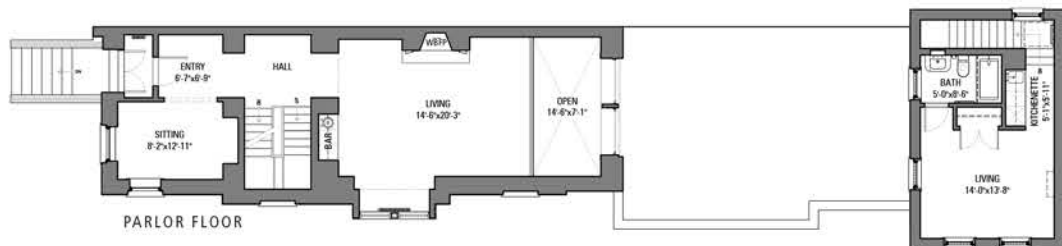
PENTHOUSE



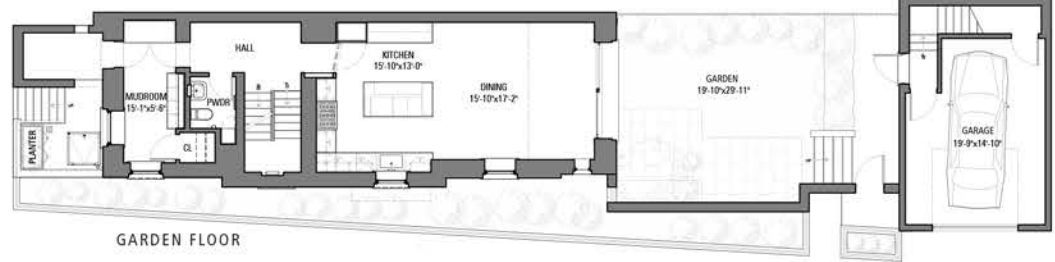
3RD FLOOR



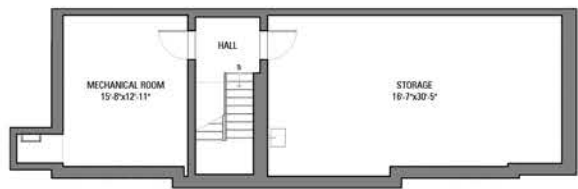
2ND FLOOR



PARLOR FLOOR



GARDEN FLOOR



CELLAR FLOOR

2 STRONG PLACE

MAIN HOUSE, INTERIOR	4,000 SF
CELLAR, 9FT CEILING	965 SF
CARRIAGE HOUSE, INTERIOR	800 SF
EXTERIOR TOTAL	1,170 SF
GARDEN	595 SF
MASTER BEDROOM TERRACE	70 SF
PENTHOUSE TERRACE FRONT	220 SF
PENTHOUSE TERRACE REAR	225 SF

DEFINING FEATURES

- Three Exposures
- Radiant Heated Wood Floors
- Wood Burning Fireplace
- Custom, Painted, Wood Cabinetry
- Mudroom with Custom Built-Ins
- 2-Story Rear Window Wall
- Double-pane insulated Marvin Windows
- Detached 2-Story Carriage House



All information furnished regarding property for sale, rental or financing is from sources deemed reliable, but no warranty or representation is made as to the accuracy thereof and same is submitted subject to errors, omissions, change of price, rental or other conditions, prior to sale, lease or financing or withdrawal without notice. All dimensions are approximate. All images are artist renderings. Final product may vary.

2 STRONG PLACE, COBBLE HILL



IN JUST MINUTES, YOU CAN WALK OR BIKE TO:

- Brooklyn Bridge Park
- F and G subway lines
- Court Street shops and Smith Street dining: Barney's, Book Court, Cobble Hill Park, Rag and Bone, Shen Beauty, Splendid, Staubitz, Ted & Honey's, Trader Joe's, Urban Outfitters

BRENNAN REALTY SERVICES LLC

From representing residential buyers and sellers in re-sales and new development (townhouses, condos, and co-ops), to owners and renters of multi-family properties, Brennan is a respected source of real estate counsel. Our brokerage blends traditional wisdom (knowing the market, as well as the neighborhoods and their residents) with modern resources (comprehensive marketing materials, online listing services, real estate networks, and global reach) to leverage a well-crafted and informed experience for buyers, sellers, and developers alike.

Betsy Hoffman (Elizabeth Hoffman), *Real Estate Salesperson*
TEL [917] 622-3879 | bhoffman@BrennanRealtyServices.com

www.brennanrealtyservices.com

**Brennan Realty Services, LLC is a licensed
real estate brokerage in New York.**